

# CNC machine

with servo motor drive

**FLATCom**<sup>®</sup>  
M series

We offer  
**FINANCING!**

## Features

- 5-axis machining
- moving portal, fixed bench
- maintenance-free motors



Interesting application videos can be found on our YouTube channel. Just take a look!



## FlatCom M 40

with open hood and options: spindle motor, tool changer, VakuFit vacuum clamping plate, length measuring key, CoolMin tool cooling, CNC joystick

## Technical specifications

	<b>FLATCom</b> <sup>®</sup> M 20	<b>FLATCom</b> <sup>®</sup> M30	<b>FLATCom</b> <sup>®</sup> M40	<b>FLATCom</b> <sup>®</sup> M50
<b>Processing areas X/Y [mm] *</b>	700 / 600	700 / 900	1,200 / 900	1,200 / 1,400
<b>Z lift [mm]</b>	150 (optional 250, in each case without processing unit)			
<b>Bench clamping area W x D [mm]</b>	750 x 750	750 x 1,000	1,250 x 1,000	1,250 x 1,500
<b>Z gap [mm] *</b>	200 (optional 300, in each case without processing unit)			
<b>Dimensions WxDxH [mm]</b>	1,420 x 1,150 x 1,870	1,420 x 1,450 x 1,870	1,920 x 1,450 x 1,870	1,920 x 1,950 x 1,870
<b>Processing speed X/Y/Z</b>	max. 250 mm/s			
<b>Repeat accuracy [mm]</b>	± 0.02			
<b>Drive motors</b>	Servo motors			
<b>Drive elements X/Y/Z</b>	Recirculating ball drive, adjustable for no play			
<b>Controller</b>	iMD CAN controller with 3 drive controllers, expandable to 12 axes (max. 6 interpolated & 6 handling axes), PC, I/O module, safety circuit with rest state monitoring, power supply unit 48 V / 1000 W			
<b>Operation</b>	Control panel iOP-19-TFT			
<b>Weight (kg)</b>	approx. 300	approx. 340	approx. 450	approx. 525
<b>Software</b>	Windows, WinRemote (optional: ProNC, isy 2.8)			
<b>Connection values</b>	230V, 16A		400V, 16A	
<b>Part-no. (Z lift = 150 mm)</b>	<b>276023 52455E</b>	<b>276033 52455E</b>	<b>276043 52455E</b>	<b>276053 52455E</b>
<b>Part-no. (Z lift = 250 mm)</b>	<b>276023 53455E</b>	<b>276033 53455E</b>	<b>276043 53455E</b>	<b>276053 53455E</b>

\* without mounted components on the axes !

# CNC machine

## with servo motor drive

# FLATCom<sup>®</sup>

## M series

### Features

- Portal gap: 200mm, optional 300mm
- Maintenance-free servo motors
- Maximum spindle motor size up to 1.5 kW
- Available with or without protective hood
- Ideal for multi-shift operation
- Control panel iOP-19-TFT
- Control PC iPC 25 including PCI card Win 7/64 bit

### Areas of applications

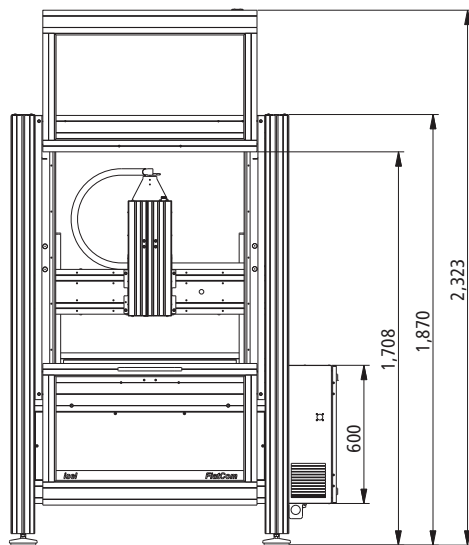
For the machining of:

- Plastics
- Wood
- Foams
- Plexiglas

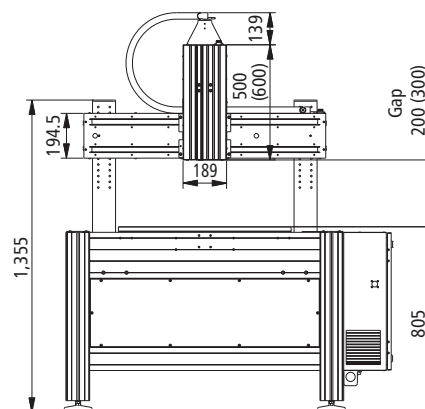
### Options

- PC control console with free PCI plug-ins (for use by external PCI hardware)
- Safety light curtain
- Milling and engraving spindles
- SK11/SK20 automatic tool change stations
- Minimum quantity lubrication or CoolMin cooling system
- Vacuum clamping benches
- Suction device
- 4th axis e. g. RDH series installation
- Version without hood
- Maximum 6 interpolated axes + 6 handling axes
- Portal gap 300 mm
- Pneumatic sliding door

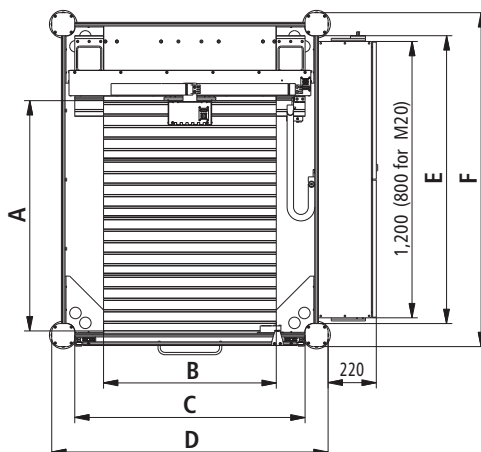
### Dimensioned drawings



FlatCom with sub-frame and hood



FlatCom with sub-frame and without hood



	A	B	C	D	E	F
FlatCom M20	750	750	1,000	1,200	950	1,150
FlatCom M30	1,000	750	1,000	1,200	1,250	1,450
FlatCom M40	1,000	1,250	1,500	1,700	1,250	1,450
FlatCom M50	1,500	1,250	1,500	1,700	1,750	1,950

Technical specifications subject to change.